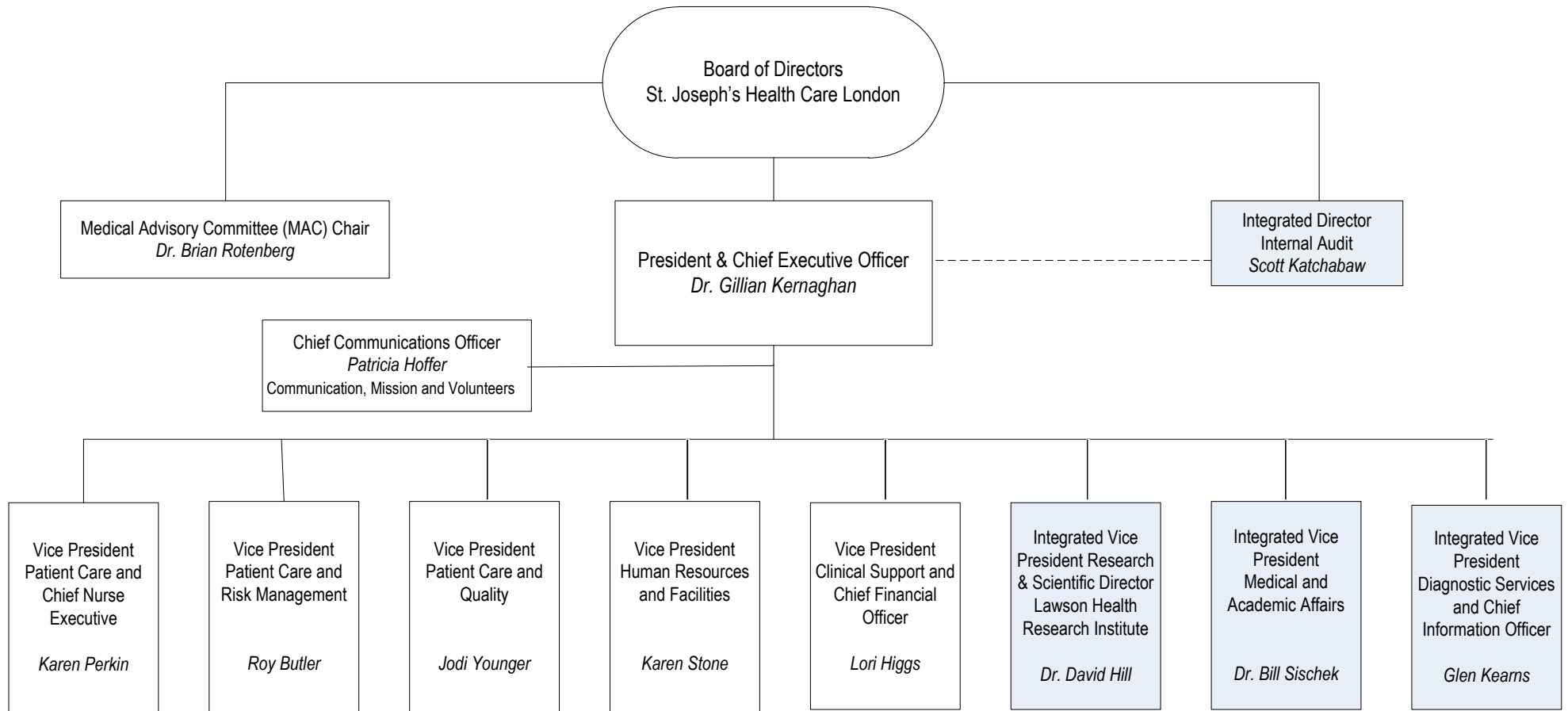




# St. Joseph's Health Care London Corporate Organizational Chart

Effective October 2019



- St. Joseph's Hospital Clinical Programs and Site Lead
- Professional Practice
- Ethics
- Spiritual Care
- Pharmacy

- Parkwood Institute Main Building and Mount Hope Clinical Programs and Site Lead
- Privacy, Risk and Patient Relations
- Emergency Preparedness

- Southwest Centre for Forensic Mental Health Care and Parkwood Institute Mental Health Care Building Clinical Programs and Site Lead
- Quality/Decision Support
- Project Management

- Human Resources
- Organizational Development
- Occupational Health and Safety
- Facilities
- Security Services

- Finance
- HMMS
- Health Records
- Food Services
- Environmental Services

Lawson Health Research Institute

- Medical & Academic Affairs
- Medical/Dental Departments
- Medical Quality (St. Joseph's)
- Infection Prevention and Control (St. Joseph's)

- Medical Imaging
- Pathology and Laboratory Medicine (PALM)
- Telemedicine
- Information Technology Services
- Regional ITS Services
- Biomedical Engineering
- Clinical Informatics